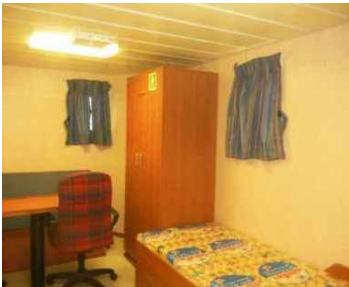




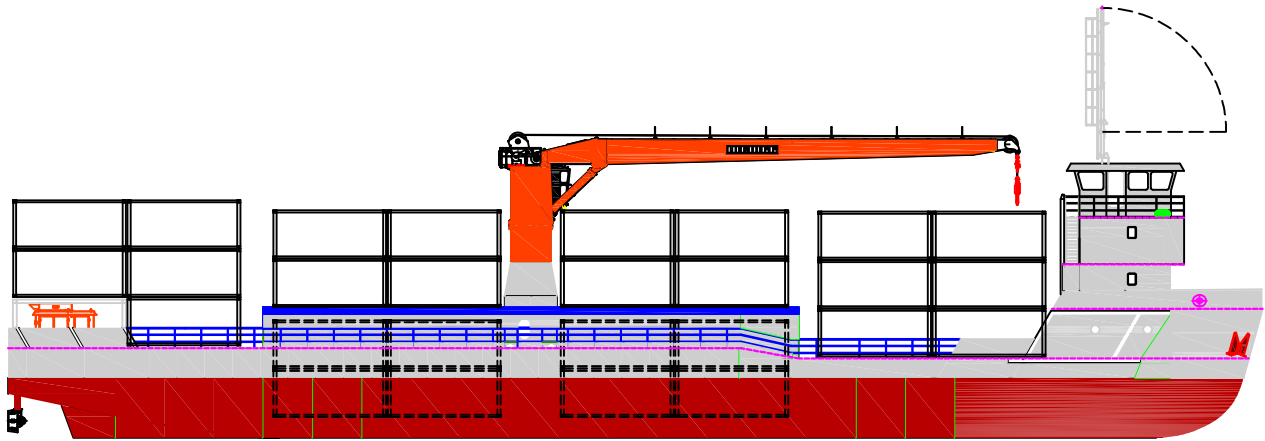
CHOWGULE
G R O U P
S I N C E 1 9 1 6



106TEU CONTAINER RIVER SEA VESSEL



106 TEU CONTAINER RIVER SEA TYPE IV VESSEL



CHARACTERISTICS

Compact container feeder 'River Sea Vessel' with container handling crane & deck mounted propulsion capable of loading/unloading at minor ports also.

MAIN PRINCIPALS

Length over all	:	67.20 m
Length between perpendiculars	:	63.63 m
Beam moulded	:	13.30 m
Depth	:	04.20 m
Draught	:	03.20 m
Deadweight	:	+1560 DWT
Tonnage	:	1335 GT
	:	421 NT
Speed Loaded@ 90% MCR	:	abt 8.0 Kts
Compliment	:	11 Persons

MAIN PROPULSION EQUIPMENT

Engine	:	Volvo Penta, 2x 294 kW@ 1800RPM
Rudder Propeller	:	2 x Deck Mounted azimuth thruster
Emergency Diesel Set	:	1x 40 kW

SPEED CHARACTERISTICS

Service Speed	:	7.0 Knots fully loaded at 85% MCR
---------------	---	-----------------------------------

FUEL CONSUMPTION

2.4 KL Per Day Including 1Aux DG running @ 85% MCR

CLASS REGULATIONS

Indian Register of Shipping
+ SUL Container Ship +IY Indian River Sea Vessel Type IV

LOADING CAPACITIES

Hold Dimensions	:	(2) x 12.6x10.64 x 6m
Hold capacity	:	1609 Cu m /56,812 Cu ft

CONTAINER CAPACITIES :

Container in Holds	32 TEU or 16 FEU
Container on Hatch Cover	30 TEU or 14 FEU + 2 TEU
Container on Main Deck	44 TEU or 20 FEU + 4 TEU
Reefers Sockets	20 Nos

MAXIMUM STACK LOAD CONTAINER 20' 40' ULD

On Tank Top	75t	90t	5.5t/m ²
On Main Deck	55t	65t	1.0t/m ²
On Hatch Covers	25t	35t	1.0t/m ²

ADDITIONAL EQUIPMENT

Antiheeling System	:	3000 m ³ /hr
Auxiliary DG Set	:	2 x 168 kW
Emergency Diesel Set	:	1 x 40 kW
Deck Container Crane:	1 x Cylinder Luffing, Electric Hydraulic with SWL 30T @ 23m, 40T@ 20M	
	Load/ Unload 10 Containers/ hr	

TANK CAPACITIES

Fuel Incl. day tanks	:	78 m ³
Fresh Water	:	29 m ³
Water Ballast	:	1020 m ³

All details believed to be correct and subject to reconfirmation